



# OratectPlus™ Reference Guide

The OratectPlus™ Oral Fluid Drug & Alcohol Screen Device is a simple one-step test for the detection of drugs of abuse and alcohol in oral fluid. **OratectPlus™ Procedures** -- Refer to package insert for detailed instructions and technical information.

## Procedures

1. Remove the clear cap to expose the collection pad by holding the sides and pulling gently. Make sure a blue line is present in each drug test window and the alcohol test pad is not cream colored indicating an unused device.
2. Open mouth and gently rub the collection pad inside mouth against cheek in a circular motion several (approximately 15-20) times. Make sure to keep head level.
3. Gently rub the collection pad against the opposite cheek in circular motion several (approximately 15-20) times.



4. Gently rub the collection pad on top of the tongue several (approximately 15-20) times. Do not chew, suck, bite or bend the collection pad.



6. Place the collection pad underneath the tongue for approximately 30 seconds to collect saliva. Instruct the donor to hold the device in place with hand. Sufficient amount of saliva collected is indicated by the flow of the blue lines. Repeat steps 2-6 until blue lines flow.



7. Remove from mouth as soon as blue lines flow at both of the test windows. Re-cap the device.



5. Rub the collection pad underneath the tongue several (approximately 15-20) times.

8. Lay the device on a flat surface and read results in 5 minutes after removing the device from mouth. Do not read alcohol results after 7 minutes. Drug test results may be read for up to 30 minutes.

## Interpretation of Results

### Alcohol

- **Invalid Results:** If the outer edges change color while most of the pad remains colorless, the test is invalid. Repeat the test with a new device.



- **Negative Results:** When there is no color change to the cream colored pad the test is negative.



- **Presumptive Positive Results:** Any color change (from light blue or green to a dark green or gray) should be considered a presumptive positive result.



### Drug

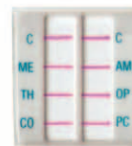
- **Invalid Results:** When no colored band appears in the CONTROL (C) region the test is invalid. Repeat the test with a new device.



Example Interpretation:

ME: Invalid  
 TH: Invalid  
 CO: Invalid  
 AM: Invalid  
 OP: Invalid  
 PC: Invalid

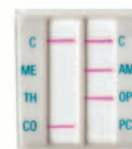
- **Negative Results:** When two colored bands appear in the CONTROL (C) region and the specific TEST (T) region the test is negative.



Example Interpretation:

ME: Negative  
 TH: Negative  
 CO: Negative  
 AM: Negative  
 OP: Negative  
 PC: Negative

- **Presumptive Positive Results:** When a colored band appears at the CONTROL (C) region, but not at the specific TEST (T) region the test should be considered a presumptive positive



Example Interpretation:

ME: **Presumptive Positive**  
 TH: **Presumptive Positive**  
 CO: Negative  
 AM: Negative  
 OP: Negative  
 PC: **Presumptive Positive**